

Non-Mydriatic Retinal Camera TRC-NW8



Perfection for
the Professionals...

TRC-NW8

Topcon prides itself on being the leading ophthalmic camera manufacturer in the world and has been producing cameras since 1965. With this wealth of experience it comes as no surprise that when looking to produce a successor to the very popular TRC-NW6S, probably the most sold non mydriatic camera in the world, Topcon used it's vast experience in Optical/Mechanical & Software engineering to come up with a camera that would be far ahead of the competition in terms of useful functionality and would allow for consistently good quality of imaging while at the same time allowing for quicker capture. TRC-NW8 we feel will become the professional's first choice of non-mydriatic Fundus cameras.

Topcon....producers of professional equipment
for the Professional.



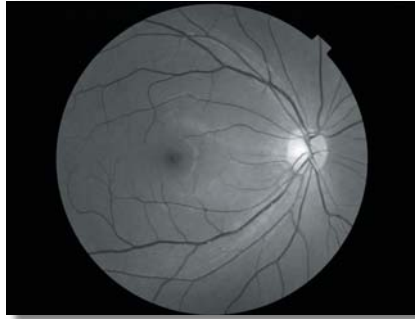
High Quality Image

True Optical Red Free Photography

Topcon has developed an innovative feature on its TRC-NW8: True optical red free capability with an actual red free filter. This feature allows for high resolution red-free image acquisition that is clearer than digitally enhanced images from colour-only imaging systems. As shown in the picture the red free and colour image capabilities are selectable by pulling out the RF filter.



Pull in/out the RF filter selector



Pull out: True Red Free image(B&W) as taken on the TRC-NW8



Pull in: Colour image

Auto Small Pupil Detection

A common problem are patients with small pupils and when mydriatic drops cannot be used the "Small Pupil" (min. Ø3.3mm) option within the TRC-NW8 allows you to still be able to get a shot.

Quality of image is crucial as well as durability

With these important requirements Topcon did not hesitate in deciding on which manufacturer it would use for its digital camera supplier.

Nikon probably has the largest reputation when it comes to digital SLR cameras and is used by most of the worlds press for very good reason. Therefore you have no need to worry that your new TRC-NW8 will ever be compromised by the digital SLR in terms of quality of image or durability.



Image with the small pupil mode

Lower Flash Intensity

Topcon has always endeavoured to keep flash levels as low as possible while at the same time ensuring that good exposed images are achieved. The TRC-NW8 is no exception here, but with greater control of the CCD camera, optimum exposure can be achieved each and every time.

Aesthetic Design

In designing the new TRC-NW8 a lot of attention has been spent on the general appearance of the unit with the finest finish and also on the ergonomics. What is clear when you sit down at the camera is how logical everything is and not cluttered by many different cables. The TRC-NW8 has a unique way of eliminating connecting cables and gives the operator a clutter free environment.

Fixation Target

In line with the requirement for Diabetic screening, when the fixation target mode is set at DCF ("D" is for centre of optic disc, "C" is for central macula and "F" is for centre of Fovea), the internal fixation target will move one by one in proper position that can be helpful in diagnosis such as glaucoma and diabetes. The setting will change in the following order.

* Please note that the following images are healthy eyes.



Optic Disc "D"



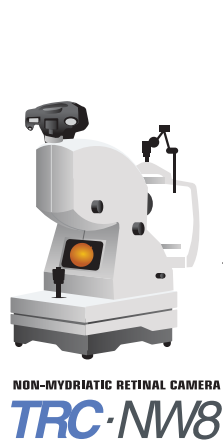
Central Macula "C"



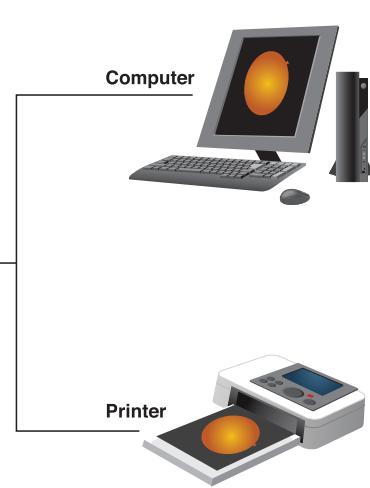
Fovea "F"

For more professional, Topcon provides advanced solutions for image acquisition.

Topcon has for many decades been at the forefront of providing software solutions to maximize the efficiency of its cameras and today offer the professional a suite of the most modern and easy to use software options, aimed at improving efficiency.



NON-MYDRIATIC RETINAL CAMERA
TRC-NW8



Computer

Printer

IMAGeNet

Using comprehensive software for capturing, processing, archiving and consulting, IMAGeNet system expands the abilities of the TRC-NW8 into a digital imaging analysis system for clinical applications.

- **NW8 Capture**

"NW8 capture" as a convenient module included in IMAGeNet is particularly easy, making it possible to control the following settings with operation of combo box.

Direct Print Out

The new TRC-NW8 camera has the adding ability of being able to print directly to a digital printer (applicable for PictBridge) and therefore does not need a separate PC. This facility is extremely useful where portability is a high priority.

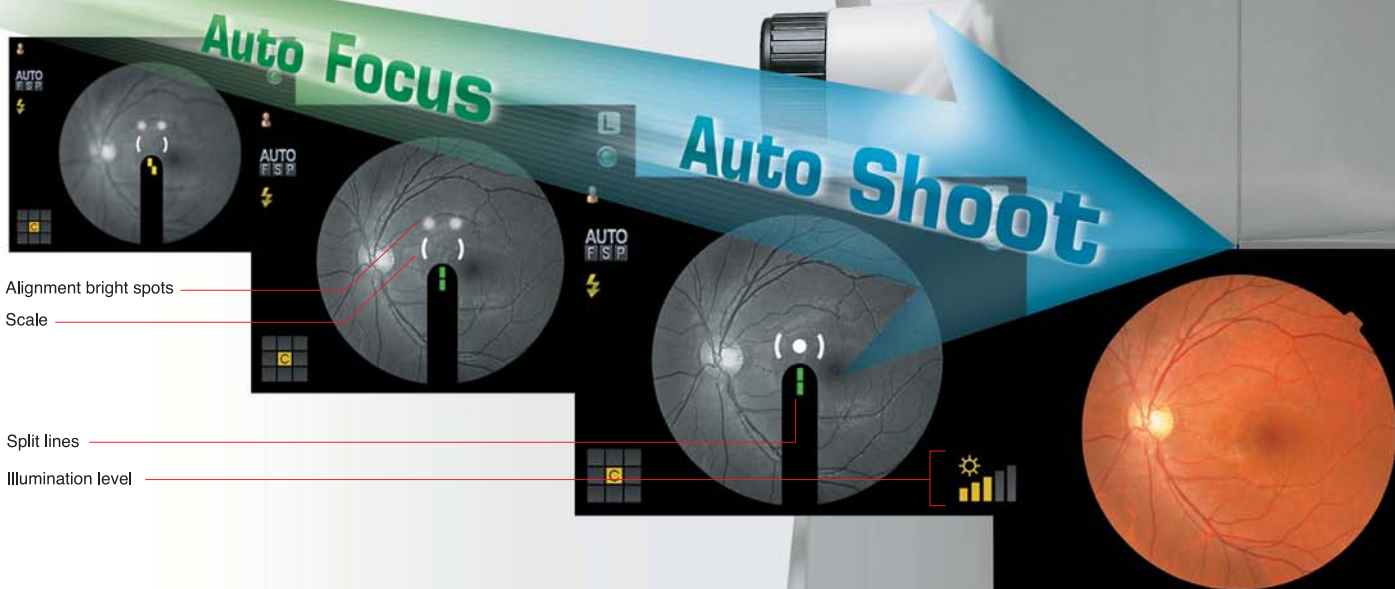
So simple to use!

With clinics getting busier these days it was seen as crucial that the new TRC-NW8 should be the easiest camera to use in order to obtain the best possible results time after time. To facilitate this new TRC-NW8 incorporates some ground breaking technology to aid the photographer.

☐ Easy alignment, Auto Focus and Auto shoot

Alignment could not be simpler with the new TRC-NW8.

Crucially the operator is still in control; however with the very latest in alignment aids the process of getting a sharp focussed image time after time could not be easier.



Auto Focus This is a new feature of the TRC-NW8 which allows the operator to choose to have Auto Focus facility. This can be of great help when trying to photograph difficult subjects or patients with high degree of accommodation. Auto Focus allows for a sharp image every time.

Auto Shoot The TRC-NW8 has the option for Auto Shoot which is of great benefit to the operator as it monitors when all parameters are correct and takes the picture. This rapidly speeds up capture process and is of great benefit when photographing patients who have problems fixating.

Specifications

Angle of coverage	45°
Working distance	40.7mm
Pupil diameter for photography	4.0mm or more 3.3mm or more when the small pupil diaphragm is used
Type of photography	Colour photography and red-free photography
Patient diopter correction range	Without correction lens: -13D to +12D (where split lines are used) With minus correction lens: -12D to -33D With plus correction lens: +9D to +40D
Auxiliary function for photography	Auto focus function (Used only in the split line working range. This can be turned ON/OFF.)
Internal Fixation Target	Center/Periphery Right/left eye automatic detection Optional position presetting function
Base movement	Back-forth:46mm, Right-left:100mm, Up-down:30mm
Chinrest movement	67mm
Power source	Frequency:50/60Hz Voltage:AC110,120,230,240V selectable
Weight	24.5kg
Dimensions	272(W) X 505(D) X 530(H)mm
Power consumptions	400VA(Maximum),100VA(Normal)



*Subject to change in design and/or specifications without advanced notice

IMPORTANT

In order to obtain the best results with this instrument, please be sure to review all user instructions prior to operation.



TOPCON CORPORATION



TOPCON CORPORATION



EC9711081



TOPCON CORPORATION

CONNECTING VISIONS

75-1 Hasunuma-cho, Itabashi-ku, Tokyo 174-8580, Japan. Phone:3-3558-2523/2522 Fax:3-3960-4214 www.topcon.co.jp

TOPCON MEDICAL SYSTEMS, INC.

111 Bauer Drive, Oakland, NJ 07436, U.S.A.
Phone:+1-201-599-5100 Fax:+1-201-599-5250 www.topconmedical.com

TOPCON CANADA INC.

110 Provencher Avenue, Boisbriand, QC J7G 1N1 CANADA
Phone:+1-450-430-7771 Fax:+1-450-430-6457 www.topcon.ca

TOPCON EUROPE MEDICAL B.V.

Essebaan 11; 2908 LJ Capelle a/d IJssel; P.O.Box145;
2900 AC Capelle a/d IJssel, THE NETHERLANDS
Phone:+31-(0)10-4585077 Fax:+31-(0)10-4585045
E-mail: medical@topcon.nl; www.topcon.eu

ITALY OFFICE

Viale dell'Industria 60; 20037 Paderno Dugnano; (Milano), ITALY
Phone:+39-02-9186671 Fax:+39-02-91081091 E-mail: topconitaly@tiscali.it; www.topcon.it

DANMARK OFFICE

Praestemarksvej 25; 4000 Roskilde, DANMARK
Phone:+45-46-327500 Fax:+45-46-327555

E-mail: topcon@topcondanmark.dk www.topcondanmark.dk

IRELAND OFFICE

Unit 276, Blanchardstown; Corporate Park 2 Ballycoolin Dublin 15, IRELAND
Phone:+353-18975900 Fax:+353-18293915 E-mail: medical@topcon.ie; www.topcon.ie

TOPCON S.A.R.L.

89, rue de Paris 92585 Clichy, FRANCE
Phone:+33-(0)1-41069494 Fax:+33-(0)1-47390251 E-mail:topcon@topcon.fr; www.topcon.fr

TOPCON DEUTSCHLAND G.m.b.H.

Hanns-Martin-Schleyer Strasse 41; D-47877 Willich, GERMANY
Phone:+49-(0)2154-8850 Fax:+49-(0)2154-885177 E-mail:med@topcon.de; www.topcon.de

TOPCON SCANDINAVIA A.B.

Neogatan 2; P.O.Box 25; 43151 Mölndal, SWEDEN
Phone:+46-(0)31-7109200 Fax:+46-(0)31-7109249 E-mail:medical@topcon.se; www.topcon.se

TOPCON ESPAÑA S.A.

HEAD OFFICE
Frederic Mompou 4 Esc. A Bajos 3, 08960 Sant Just Desvern Barcelona, SPAIN
Phone:+34-93-4734057 Fax:+34-93-4733932 E-mail: medical@topcon.es; www.topcon.es

PORTUGAL OFFICE

Rua da Forte,6-6A,L-0,22.2790-072 Carnaxide,PORTUGAL
Phone:+351-210-994626 Fax:+351-210-938786 www.topcon.pt

TOPCON (GREAT BRITAIN) LTD.

Topcon House,Kennet Side,Bone Lane,Newbury,Berkshire RG14 5PX United Kingdom
Phone:+44-(0)1635-551120 Fax:+44-(0)1635-551170 E-mail:medical@topcon.co.uk; www.topcon.co.uk

TOPCON POLSKA Sp. z. o. o.

ul. Warszawska 23; 42-470 Siewierz, POLAND
Phone:+48-(0)32-6705045 Fax:+48-(0)32-6713405 www.topcon-polska.pl

TOPCON SINGAPORE MEDICAL PTE. LTD.

60 Alexandra Terrace, #08-27 The Comtech, Singapore 118502
Phone:+65-68720606 Fax:+65-67736150 E-mail:medical_sales@topcon.com.sg www.topcon.com.sg

TOPCON INSTRUMENTS (MALAYSIA) SDN.BHD.

No. D1, (Ground Floor), Jalan Excella 2, Off Jalan Ampang Putra,
Taman Ampang Hilir, 55100 Kuala Lumpur,MALAYSIA
Phone:+60-(0)3-42709866 Fax:+60-(0)3-42709786

TOPCON INSTRUMENTS (THAILAND) CO.,LTD.

77/162 Sinnsathorn Tower, 37th Floor,Krungthonburi Rd.,Klongtongtai,
Klongsam, Bangkok 10600,THAILAND
Phone:+66(0)2-440-1152-7 Fax:+66(0)2-440-1158

TOPCON CORPORATION BEIJING OFFICE

Block No.3, Kangding Street Beijing Economic-Technological Development Area,
Beijing,100176,CHINA
Phone:+86-(0)10-6780-2799 Fax:+86-(0)10-6780-2790

TOPCON CORPORATION SHANGHAI OFFICE

14L Huamin Empire Plaza, No.726, Yan-an Xi Road,
Shanghai, 200050, CHINA
Phone:+86-(0)21-5238-7722 Fax:+86-(0)21-5237-0761

TOPCON CORPORATION BEIRUT OFFICE

P.O.Box 70-1002 Antelias,Beirut, LEBANON
Phone:+961-4-523525/523526 Fax:+961-4-521119

TOPCON CORPORATION DUBAI OFFICE

P.O.Box 293705,Office C-25(row C-2), Dubai Airport Free Zone, Dubai,
United Arab Emirates
Phone:+971-4-299-5900 Fax:+971-4-299-5901