



Vantage Plus Digital

Binocular indirect ophthalmoscope

 **Keeler**



Addressing modern ophthalmology challenges

Ophthalmologists today face significant challenges, especially when capturing images of the peripheral retina. Widefield fundus cameras, while useful, are often unsuitable for use in the operating room or for pediatric patients. Additionally, binocular indirect ophthalmoscopy can be difficult to teach and learn.

High-quality imaging is crucial for accurate documentation and teaching. However, current tools often fall short in meeting these needs. The Vantage Plus Digital fits seamlessly into the existing workflow of ophthalmologists, allowing them to capture high-resolution images while using their binocular indirect ophthalmoscope. This integration simplifies the process, enhances documentation, and supports better patient care.

Focused on you

Keeler has a long-standing legacy of excellence in optical innovation, particularly with our binocular indirect ophthalmoscopes (BIOs). Keeler is proud to manufacture and assemble its instruments in the UK and the US, and for over a century, we've been dedicated to providing eyecare professionals with the highest quality ophthalmic devices, ensuring optical precision and reliability in every product. Our commitment to innovation and quality has made us a trusted name in the industry, and because we know that everyone needs a little help from time-to-time, our unmatched customer and technical support teams are ready whenever you need them.



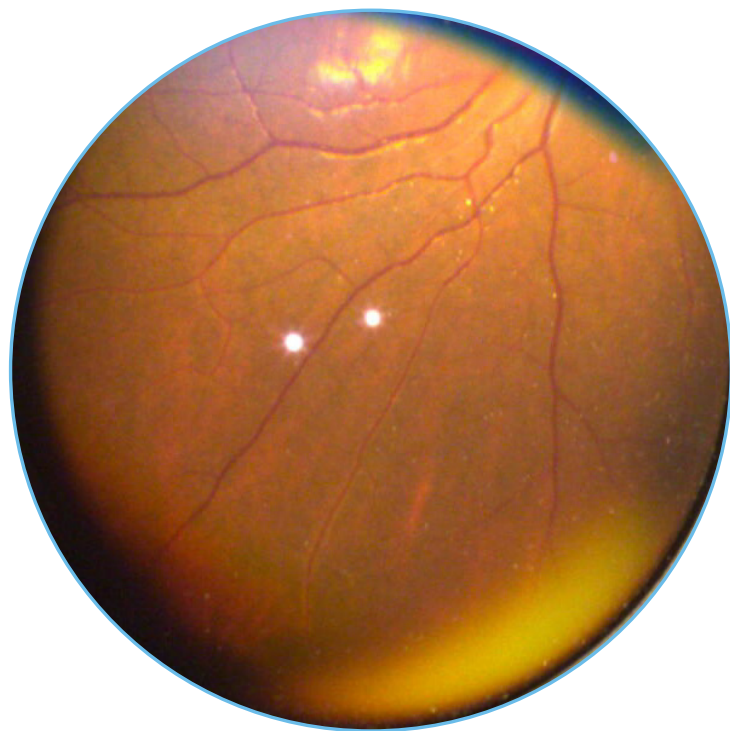
**Visualise, capture and
store high-resolution
images and videos in
real time**

Discover the benefits of Vantage Plus Digital

Unparalleled optics and visual performance

Keeler's optics are renowned for their exceptional quality and precision. With a legacy spanning over a century, we use only the highest quality materials and employ advanced laser alignment techniques to ensure perfect clarity and sharpness.

Our commitment to excellence in optics means you can trust Vantage Plus Digital to deliver unparalleled visual performance, making every examination clear and accurate.



Capture high-resolution images and videos in real time

The Vantage Plus Digital revolutionises your binocular indirect ophthalmoscopy exam by capturing and recording exactly what you see in real time.

Equipped with a high-resolution 3.2MP camera featuring best-in-class Sony technology, it offers unmatched dynamic range and sensitivity. The USB 3.0 interface ensures a high frame rate, delivering smooth, detailed video.

With Vantage Plus Digital, you get a seamless blend of examination and documentation in vivid high-resolution.



Focused images in every exam

The focusing capabilities of the camera are essential for a digital indirect, where the device must accommodate both multiple users and variations in working distances within the same exam. Vantage Plus Digital is designed with this in mind. You can easily adjust the focus knob to suit different users, ensuring a seamless experience in shared settings. Meanwhile, the enhanced depth of field keeps images clear, even with variations in working distance during a single exam. Spend less time adjusting focus and more on capturing the perfect image.

Dynamic exams, always in view

Vantage Plus Digital builds on the strengths of its predecessor, offering a larger field of view that covers more than an entire 20D lens within its frame. This expanded view ensures that even as you move around the patient or shift your head, the lens and image stay consistently in view.

Additionally, the camera angle can be adjusted independently of the BIO optics, allowing you to maintain the angle you're most comfortable with, without any disruptions. With Vantage Plus Digital, you can focus on delivering precise, high-quality images, confident that your tools will keep up with your movements.



NEW Kinexis software



Advanced functionality at your fingertips

Keeler Kinexis software has been designed to support every aspect of your examination process. Comprehensive, yet user friendly, Kinexis allows you to seamlessly integrate with DICOM for efficient data sharing, utilise side-by-side image comparison to monitor patient progress, and generate detailed reports with ease. These capabilities are built to enhance your workflow while maintaining simplicity and accessibility.

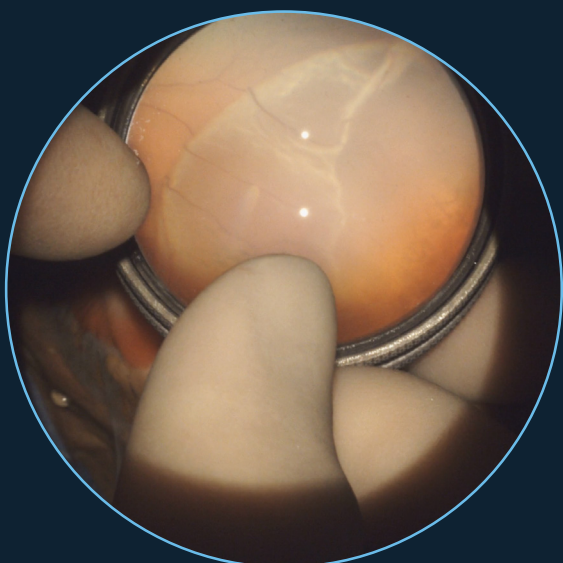
Intuitive interface for effortless use

Keeler Kinexis software is thoughtfully designed for simplicity, featuring an intuitive interface that is both easy to learn and use. Whether you're an experienced professional or a first-time user, the software's straightforward navigation minimises the learning curve, allowing you to achieve results more quickly and efficiently.



Livestream and record exams for teaching

Teaching the technique of binocular indirect ophthalmoscopy can be challenging. Kinexis simplifies this by enabling you to livestream your indirect exams in high resolution, replacing the traditional teaching mirror. Now, you can explain and demonstrate pathologies in real-time as your students and residents observe on a monitor, whether during scleral buckle surgery or an intended exam. Plus, with Kinexis, you can save these recordings and extract images at any point, ensuring that no critical detail is missed.



Technical specifications

| | | | |
|------------------------------|--------------------------|--------------------------------------|--|
| Pupil size | 1-10mm | Camera working distance range | 30-65cm (for 20D lens) |
| Patch size | 20mm, 40mm, 60mm (S/M/L) | Accessories | Travel case (included) Foot switch (upgrade option) |
| Stereopsis adjustment | Automatic | Dimensions | 35cm (L) x 23cm (W) x 22cm (H) |
| PD range | 48-76mm | Minimum system requirements | Operating system: Windows 10/11 Processor: Intel i5 or higher RAM: 8GB Display: 1920 x 1080 Screen size: 14 inches Hard drive: 512 GB SSD Connectivity: USB: 3.0 |
| Illumination type | LED | | |
| CRI | 90 | | |
| Camera resolution | 3.2MP | | |
| Images resolution | 2048 x 1536 | | |
| Camera adjustment | ±7° | | |

Ordering information

| | |
|--------------------|--|
| 1205-P-5010 | Vantage Plus Digital |
| 1012-P-7010 | Vantage Plus Digital replacement white LED |
| 1205-P-7001 | Foot switch (upgrade option) |



Visit keelerglobal.com for our full range including:



BIO



Slit lamps



Ultrasound



Handhelds



Clinical



 **Keeler**
A **Halma** company

Contact us

Phone: +44 (0)1753 857 177

Email: sales@keeler.co.uk

UK
CA 0120 CE 1639

EC REP

Keeler Europe Distribution, S.L.
Colom, 453, nau D50
08223 Terrassa, Spain

CH REP

Medicel AG
Dornierstrasse 11
CH-9423 Altenrhein, Switzerland



Keeler Ltd. Clewer Hill Road,
Windsor, SL4 4AA

19072024 REV A