

Fundus Viewer System

FV-1L & FV-1A



CONNECTING VISIONS

Ultimate Fundus Viewing System for Slitlamp

Topcon's Fundus Viewer System FV-1L (Lens Holder) and FV-1A (Aperture Selector) provides high-quality fundus imaging on a standard Slitlamp. The FV-1L and FV-1A are simple add-on accessories available on current Topcon Slitlamps. With the combination of Topcon's DC-3 and DV-3 digital imaging systems and Topcon's bespoke software IMAGEnet i-base your Slitlamp can provide basic fundus photography at the click of a button.



Aperture Selector, FV-1A

Reduces reflection to optimise fundus observation.

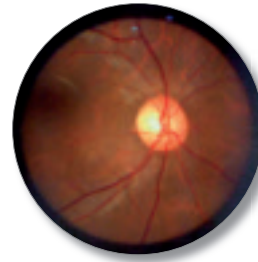
- 1 This unit can be used independently from the FV-1L.
- 2 Suitable for use with the conventional handheld lenses.
- 3 Available for use with Topcon Slitlamps SL-D7 and SL-D8Z.



Lens Holder, FV-1L

Approximately 30 degrees fundus image observation.

- 1 This unit can be used independently from the FV-1A.
- 2 Suitable for use with Topcon's range of current Slitlamps.
- 3 This unit may also be used with non-Topcon Slitlamps. (Contact your local distributor for solutions).



Storing stand (FV-1L) (optional accessory)

Combination Overview

Handheld lens	FV-1L	FV-1A	Effect
o	-	o	Conventional handheld lens view with less reflection
-	o	-	30 degrees wide fundus image
-	o	o	30 degrees wide fundus image with less reflection

Specifications

FV-1L Lens holder	
Lens type	Volk® 60D Double aspheric
Lens adjustment range	From -15 diopter (-5,7 mm) to +5 diopter (+1,9 mm)
Working distance	13 mm
Field of view	30 degrees
Dimensions	63 (W) x 214,5 (H) x 75 (L)
Weight	30 gr
FV-1A Aperture selector	
Aperture sizes	4 settings: Ø 0,35 Ø 0,50 Ø 0,70 and fully open (aperture off)
Dimensions	76 (Ø) x 83,5 (H)
Weight	60 gr



IMPORTANT Subject to change in design and/or specifications without advanced notice.

In order to obtain the best results with this instrument, please be sure to review all user instructions prior to operation.

Topcon Europe Medical B.V.
Essebaan 11; 2908 LJ Capelle a/d IJssel; P.O. Box 145;
2900 AC Capelle a/d IJssel; The Netherlands
Phone: +31-(0)10-4585077; Fax: +31-(0)10-4585045
E-mail: medical@topcon.nl; www.topcon.eu

Topcon Danmark
Præstemarksvej 25; 4000 Roskilde, Denmark
Phone: +45-46-327500; Fax: +45-46-327555
E-mail: topcon@topcondanmark.dk
www.topcondanmark.dk

Topcon Scandinavia A.B.
Neogatan 2; P.O. Box 25; 43151 Mölndal, Sweden
Phone: +46-(0)31-7109200; Fax: +46-(0)31-7109249
E-mail: medical@topcon.se; www.topcon.se

Topcon España S.A.
HEAD OFFICE; Frederic Mompou, 5;
08960 Sant Just Desvern; Barcelona, Spain
Phone: +34-93-4734057; Fax: +34-93-4733932
E-mail: medica@topcon.es; www.topcon.es

Topcon Italy
Viale dell' Industria 60;
20037 PADERNO DUGNANO; (MI) ITALY
Phone: +39-02-9186671; Fax: +39-02-91081091
E-mail: topconitaly@tiscali.it; www.topcon.it

Topcon S.A.R.L.
HEAD OFFICE; 89, rue de Paris; 92585 Clichy, France
Phone: +33-(0)1-41069494; Fax: +33-(0)1-47390251
E-mail: topcon@topcon.fr; www.topcon.fr

Topcon Deutschland GmbH
Hanns-Martin-Schleyer Strasse 41;
D-47877 Willich, Germany
Phone: (+49) 2154-885-0; Fax: (+49) 2154-885-177
E-mail: med@topcon.de; www.topcon.de

Topcon Portugal
Rua da Forte, 6-6A, L-0.22; 2790-072
Carnaxide; Portugal
Phone: +351-210-994626; Fax: +351-210-938786
www.topcon.pt

Topcon Polska Sp. z o.o.
ul. Warszawska 23; 42-470 Siewierz; Poland
Phone: +48-(0)32-670-50-45; Fax: +48-(0)32-671-34-05
www.topcon-polska.pl

Topcon (Great Britain) Ltd.
Topcon House; Kennet Side; Bone Lane; Newbury
Berkshire RG14 5PX; United Kingdom
Phone: +44-(0)1635-551120; Fax: +44-(0)1635-551170
E-mail: medical@topcon.co.uk; www.topcon.co.uk

Topcon Ireland
Unit 276, Blanchardstown; Corporate Park 2
Ballycoolin; Dublin 15
Phone: +353-18975900; Fax: +353-18293915
Email: medical@topcon.ie; www.topcon.ie

